

MECHANICAL ENGINEERING  
ELECTRICAL ENGINEERING  
ENERGY CONSERVATION  
STRUCTURAL ENGINEERING



## INTRODUCTION

W. AND ASSOCIATES's group activities started in early 1965. Group activities were focusing on M&E engineering design services. In 1973, W. AND ASSOCIATES ROP. was then established to be consulting firm specializing in Mechanical, Plumbing, Sanitary, Electrical and Telecommunication .

During Thailand's booming economy, W. AND ASSOCIATES Consultants Co., Ltd. and W. AND ASSOCIATES Designs Co., Ltd. were established to cope with the fast-expanding real estate business. W. AND ASSOCIATES engineers had under taken responsibility of numerous projects for various engineering services, both design and construction supervision. Engineering services include electrical power, lighting, fire alarm system, security system, sound system, telephone system, telecommunication system, building automation system, air-conditioning system, ventilation system, smoke control system, vertical transportation, plumbing system, sanitary system, waste treatment system, computer site support system and other related systems for several major buildings and factories in Thailand.

Moreover, in 1996, W. AND ASSOCIATES has been one of companies approved by Department of Energy Development and Promotion (D.E.D.P.) for being registered as a consultant company in energy conservation program initiated by D.E.D.P. W. AND ASSOCIATES, as a registered consultant company, will be auditing the designated buildings and factories, which cover thousands buildings nationwide, to improve building's energy

In 2012 the group has begun the service in Civil/Structural Engineering discipline with all engineering disciplines included in one umbrella, the group now is focusing on providing one-stop, all-in-one engineering service for the client.

## MESSAGE FROM PARTNERS

Our company is one of the earliest Thai owned consulting firms specializing in Building System (1965) / Civil and Structural Engineering Designs (2012). From the beginning, our company's philosophy has always been ethical practices with good and practical engineering designs. Our design principles for all of our projects are functionally advanced and economical designs meeting the present and future requirements of our clients, energy saving, ease of operation and maintenance. We will do our utmost to offer the designs which best serve our clients.

## BOARD OF DIRECTORS



**WICHAI LAKSANAKORN**  
Chairman / Co-Founder



**WITHU RUKSVANICHPONG**  
Co-Founder



**CHOKEWICHIT LAKSANAKORN**  
Managing Director

## ENGINEERING SERVICES

### CIVIL AND STRUCTURAL DESIGN

- 1.1 Structural work
- 1.2 Civil and Infrastructure work
- 1.3 Earthwork
- 1.4 Site Drainage
- 1.5 Investigation of Structural Integrity
- 1.6 Non-Destructive Structural Test

### MEP DESIGN

#### 2.1 ELECTRICAL SYSTEMS

- 2.1.1 Power
- 2.1.2 Lighting
- 2.1.3 Grounding
- 2.1.4 Emergency Power

#### 2.2 TELECOMMUNICATION SYSTEM

- 2.2.1 Premise Distribution System
- 2.2.2 PABX
- 2.2.3 Telephone Wiring System
- 2.2.4 High Speed Data Cabling System

#### 2.3 FIRE ALARM SYSTEM

#### 2.4 SECURITY SYSTEM

- 2.4.1 Closed Circuit Television (CCTV )
- 2.4.2 Access Control
- 2.4.3 Burglar Alarm

#### 2.5 AUDIO-VISUAL SYSTEM

- 2.5.1 Master Antenna Television system (MATV)

#### 2.6 VERTICAL TRANSPORTATION SYSTEM

- 2.6.1 Elevators
- 2.6.2 Escalators

#### 2.7 BUILDING AUTOMATION SYSTEM (BAS)

- 2.7.1 Energy Management
- 2.7.2 Comfort Control
- 2.7.3 Maintenance Management

#### 2.8 SANITARY SYSTEM

- 2.8.1 Waste Water Treatment
- 2.8.2 Soil, Waste, Vent piping System
- 2.8.3 Site Drainage System

#### 2.9 AIR CONDITIONING AND VENTILATING SYSTEMS

- 2.9.1 Exhaust and Ventilating System
- 2.9.2 Air-Conditioning System
- 2.9.3 Smoke Control System
- 2.9.4 Clean room System
- 2.9.5 Thermal Storage

#### 2.10 PLUMBING SYSTEMS

- 2.10.1 Cold Water Distribution System
- 2.10.2 Hot Water Distribution System
- 2.10.3 Boiler Plant
- 2.10.4 Fire Extinguishing System
- 2.10.5 Sprinkler System
- 2.10.6 LPG Gas Piping System
- 2.10.7 Swimming Pool

### PROJECT / CONSTRUCTION MANAGEMENT

- 3.1 Project / Construction Management
- 3.2 Site Supervision

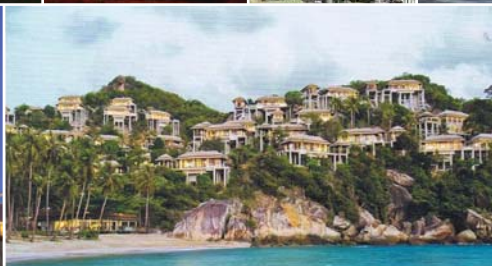
### OTHER SERVICES

#### 4.1 ENERGY CONSERVATION

- 4.1.1 Auditing Designated Buildings and Factories as a Registered Consultant to Department of Energy Development and Promotion
  - Registration Number (Building Category) : 12
  - Registration Number (Factory Category) : 45
- 4.1.2 Energy Consumption Surveys in Building

#### 4.2 VALUE APPRAISAL AND DUE DILIGENCE SERVICE







# PROFESSIONAL RECORDS

## HOTEL / RESORT

- 1.1 Banyan Tree Resort and Spa, Samui
- 1.2 W. Retreat and Residences, Samui
- 1.3 InterContinental Hua Hin
- 1.4 S31 Hotel
- 1.5 Mandarin Oriental Bangkok (the renovation)
- 1.6 Le Meridien Bangkok, Surawong
- 1.7 The Ambassador hotel (the renovation)
- 1.8 Holiday Inn Regent Beach Cha-Am
- 1.9 Holiday Inn Pattaya
- 1.10 Sheraton Grande Lagoon, Hua Hin
- 1.11 Hotel Plaza Athenae
- 1.12 Grand Hyatt Erawan Hotel
- 1.13 Westin Grande Sukhumvit (Renovation)
- 1.14 J.W. Marriott Hotel
- 1.15 Baiyoke 2 Sky Hotel
- 1.16 Swissotel (Le Concorde Complex)
- 1.17 Bangkok Peninsula Hotel (Now : Four Seasons Hotel)
- 1.18 The Fisherman's Village
- 1.19 Choenngmon Resort, Samui
- 1.20 Metropole Hotel, Phuket
- 1.21 Dusit Resort Hotel & Polo Club, Cha-Am
- 1.22 Chiangmai Holiday Inn (Green Hill) Hotel
- 1.23 Twin Lotus Hotel, Nakorn Srithamarat
- 1.24 Kempinski Hotel
- 1.25 Movenpic Hotel
- 1.26 Siam City Hotel
- 1.27 Swiss Garden Hotel
- 1.28 Bangkok Twin Tower Hotel
- 1.29 Bann Boran Chiangrai Hotel
- 1.30 Laguna Beach Club Resort
- 1.31 Siam Ballroom Phase 2 (Siam Intercontinental Hotel)
- 1.32 Royal Chiang Mai Hotel And Golf Club
- 1.33 Independence Hotel, Kampongsm, Cambodia (Renovation)
- 1.34 Little Duck Hotel, Chiangrai

## OFFICES

- 2.1 Thanaphoom Tower
- 2.2 The Elephant Building, Ratchayothin
- 2.3 United Center Tower
- 2.4 Siripinyo Building
- 2.5 S.S.P. Building 3
- 2.6 C.T.I. Tower
- 2.7 Maleenon Tower, Rama IV (including production house of channel 3 television)
- 2.8 Le Concorde Office Tower
- 2.9 Wall Street Tower
- 2.10 Sriulsup Tower
- 2.11 Beauty Gems Tower
- 2.12 Ural Building
- 2.13 Silpathai Building
- 2.14 The Nation Tower I, II
- 2.15 Thai Life Insurance Building, Rattanaibet
- 2.16 Muang Thong Thani Project (Villa Office)
- 2.17 The Malaysian Embassy
- 2.18 The Privy Council Office

## CORPORATE OFFICES

- 3.1 Stock Exchange of Thailand (New Headquarters)
- 3.2 Thai Airways International Building, Head Office
- 3.3 Bank of Asia Head Office, Robot Building
- 3.4 Siam Commercial Bank (S.C.B.), Chidlom Office
- 3.5 Siam Commercial Bank (S.C.B.), Phase III, Ratchayothin
- 3.6 Shell Building, Head Office
- 3.7 Lean Tower, Thai Airways International
- 3.8 Samaggi Insurance Tower
- 3.9 Krung Thai Bank, Head Office
- 3.10 I.F.C.T. Buildings
- 3.11 ESSO Building

## COMPLEXES

- 4.1 Jewelry Trade Center
- 4.2 Silom Complex
- 4.3 Royal Charoenkrung Tower
- 4.4 Central City Bangna ( East Tower )
- 4.5 Ploenchit Center
- 4.6 Siam Commercial Complex (S.C.B.) Phase III
- 4.7 Amarin Plaza
- 4.8 Gems Tower
- 4.9 Laksi Plaza
- 4.10 Le Concorde Complex
- 4.11 Jomthien Complex
- 4.12 Bang-Rak Plaza
- 4.13 Palm Square, Phuket

## GOVERNMENT

- 5.1 The Parliament Building, the office
- 5.2 Bank Note Printing Plant, Bank of Thailand
- 5.3 The Ministry Of Foreign Affairs Office, Jaengwattana
- 5.4 Metropolitan Electricity Authority office ( MEA ), Laksi
- 5.5 The United Nation Tower
- 5.6 Ministry of Fincance Office, Rama VI
- 5.7 The United Nations, Economic and Social Commission for Asia and the Pacific (UN-ESCAP), the renovation
- 5.7.1 Vertical Transportation
- 5.7.2 HVAC upgrading system

## RESIDENTIAL

- 6.1 Villa Asoke
- 6.2 Intro by RASA
- 6.3 Villa Rachatewi
- 6.4 The FAH
- 6.5 The Regent Bangkok
- 6.6 The SAIL Residences, Pattaya
- 6.7 Royal Charoenkrung Tower
- 6.8 Sky Beach
- 6.9 Silom Palace
- 6.10 Silver Beach
- 6.11 Lumpini Park View
- 6.12 Park Beach
- 6.13 City Lake Condominium
- 6.14 La Cascade
- 6.15 The President Park
- 6.16 Sathorn Park Place
- 6.17 Dusit Resort, Hua Hin
- 6.18 Metro Jomthien Condotel
- 6.19 Tridhos City Marina
- 6.20 Bangkok River Park Condominium
- 6.21 Thana City
- 6.22 Apartment Sukhumvit 33
- 6.23 HuaHin Sea-View Paradise
- 6.24 Bann Monchale, Cha-Am
- 6.25 Sathorn Garden
- 6.26 The Elephant Building, Ratchayothin
- 6.27 Central City Bangna (East Tower)
- 6.28 Coconut Beach Condominium, Pattaya

## RETAILS

- 7.1 Central Plaza Chiang-Rai
- 7.2 Central Plaza Pinklao (the renovation)
- 7.3 The Vue, Charoen Nakorn
- 7.4 The Rain Hill sukhumvit 47
- 7.5 Nikorn Thani
- 7.6 Porto Chino Community mall
- 7.7 Digital Gateway, Siam Square (Independent Checker)
- 7.8 BIG C Super Center
- 7.8.1 Thanyaburi Branch
- 7.8.2 Mahachai Branch
- 7.8.3 Loomsak Branch
- 7.8.4 Ta-ma-ka, Kanjanaburi Branch
- 7.8.5 Rajapruk Branch
- 7.8.6 Thepkasastree
- 7.9 Central Town Center (Rattanaibet Phase II)
- 7.10 the Erawan Bangkok
- 7.11 Central Department Store, Hua-Mark
- 7.12 Robinson Department Store, Donmuang
- 7.13 Ploenchit Center
- 7.14 Laksi Plaza
- 7.15 Bangrak Plaza
- 7.16 Silom Complex
- 7.17 Amarin Plaza
- 7.18 Cathay Department Store, Bang Kae
- 7.19 Ratchadamri Arcade
- 7.20 Ploenchit Arcade

## EDUCATION

- 8.1 IT and Laboratory Studies for medical student, Siriraj Hospital
- 8.2 Laboratories Study and Bio Safety research facilities, Khon Kaen University
- 8.3 Thammasat Gymnasium, The 13th Asian Game Project
- 8.4 Thammasat Multipurpose Building II, Bangkok
- 8.5 Medical Study building for Dentist, Khon Kaen University
- 8.6 Bangkok University art gallery and multipurpose building
- 8.7 Mae-Fah Luang University, Chiang-Rai
- 8.8 Khon Kaen University, Exhibition And Conference Building
- 8.9 Thammasat Central Library, Bangkok
- 8.9.1 Lecture Building I
- 8.9.2 Lecture Building II
- 8.9.3 Lecture Building III
- 8.9.4 Lecture Building IV
- 8.9.5 Faculty of Engineering Building (Int.)
- 8.9.6 Library Building
- 8.9.7 Laboratories
- 8.9.8 Multi – Purpose Building
- 8.10 Na-Ray Suan University, Pichit

## INDUSTRIALS

- 9.1 Yuasa Battery Factory, Gateway Industrial Estate
- 9.2 Siam Nastech Factory ( Extension )
- 9.3 Fuji Serina Factory
- 9.4 Cornel Polymer Factory
- 9.5 Siamwala Warehouse
- 9.6 Super Gold Factory
- 9.7 Universal Toy Factory (Match Box)
- 9.8 Pranda Jewelry Factory
- 9.9 Artico Craft Toy Factory
- 9.10 Match Box Factory
- 9.11 American Standard Factory, 2nd Phase
- 9.12 Tai Ping Factory, 2nd Phase
- 9.13 Coca-Cola Bottling Plants (Hua Mak, Pathumthani, Khon Kaen, Lampang, Haad Yai)
- 9.14 Bangkok Domtex
- 9.15 NTS Steelmill
- 9.16 Bangkok Weaving Mill
- 9.17 Siam Tsuchiya Factory
- 9.18 Cheena Gasket Factory
- 9.19 Siam Tsuchiya Mfg. Factory, Bangplee

## COMPUTER CENTERS

- 10.1 North Park Computer Center, Stock Exchange of Thailand
- 10.2 United Nations Computer Center, Bangkok, 1972
- 10.3 Sita Switching Center, Rajdamri Arcade, 1973
- 10.4 Computer Center At Bank Note Printing Plant, Bank Of Thailand, 1977
- 10.5 Computer Center, Siam Commercial Bank, Chidlom Office
- 10.6 Computer Center, Krung Thai Bank Head Office
- 10.7 Computer Center 1st Expansion, Siam Commercial Bank, Chidlom Office
- 10.8 Northern Computer Center, Siam Commercial Bank, Chiang Mai
- 10.9 Computer Center 2nd Expansion, Siam Commercial Bank, Chidlom Office
- 10.10 Southern Computer Center, Siam Commercial Bank, Had Yai
- 10.11 Siamnet Computer Center
- 10.12 Government Saving Bank Computer Centers at Bangkok, Chiangmai, Nakornraisima
- 10.13 ESSO's Computer Center (new), Bangkok
- 10.14 Renovations of UPS for Siam Commercial Bank Computer Center
- 10.15 Data Center, Thai Airways International

## HEALTH CARES

- 11.1 Srinakarin Hospital (Srinakarin University)
- 11.2 Ratnin Eye Hospital
- 11.3 Khon Kaen Hospital
- 11.4 Buayai Hospital
- 11.5 Siriraj Hospital, Anantamahidhol Building
- 11.6 Bumrungraj Hospital, Main Power Distribution (Renovation)
- 11.7 Khelangnakorn Hospital, Lampang
- 11.8 Kalasin Hospital

## PORTS

- 12.1 Sriracha Harbour
- 12.2 Maptaphut Port
- 12.3 Phuket Deep Sea Port
- 12.4 Songkla Deep Sea Port
- 12.5 Donmuang Airport (Air-Bridge Terminals)

## MASTER PLAN, INFRASTRUCTURE PROJECT

- 13.1 Mass Rapid Transport Authority (MRTA) (CSC I)
- 13.2 Mae-Fah Luang University, Chiang-Rai
- 13.3 The Master Plan For National Housing Authority, Din-Daeng Site
- 13.4 Muang Thong Thani, Infrastructure
- 13.5 Telephone Organization Of Thailand, Ploenchit Office
- 13.6 State Railway Of Thailand
- 13.6.1 Pahnolyothin Site
- 13.6.2 Makkasan Site
- 13.7 The Government House

## LABORATORY

- 14.1 Siriraj Hospital, IT Studies and Laboratory for Medical studies
- 14.2 Khon Kaen University Laboratory for Medical studies

## OTHER PROJECTS

- 15.1 Community Market, Phnom Penh, Cambodia (Soraya Market)
- 15.2 New Office, Storage and Garage of ESSO Standard Thailand Limited, Bangkok
- 15.3 ESSO's Chongnonsri Terminal Security System And Command Center
- 15.4 Multi-Credit Corporation of Thailand Company Limited (Kanchanatat Building Branch)
- 15.5 Thanmasat Gymnasium, The 13th Asian Game
- 15.6 Mae-Ping Convention (Imperial Mae-Ping Hotel)

## ENERGY CONSERVATION PROJECT

- 16.1 Hawaii Tower, Bangkok
- 16.2 TOT services center, Maptapud, Rayong
- 16.3 Song Phunburi Hotel, Suphanburi
- 16.4 Petcharat Hospital, Petchburi
- 16.5 Saovaluk Thani Hotel, Surat Thani
- 16.6 Rajabhat Burirum, Burirum
- 16.7 Amarin Plaza, Bangkok
- 16.8 Sukhumvit Hospital
- 16.9 AP National, Samut Prakarn
- 16.10 Samaggi Insurance, Bangkok
- 16.11 Laksi Plaza, Bangkok
- 16.12 Riverside Hotel, Bangkok
- 16.13 Saint John University, Bangkok
- 16.14 Saint John Polytechnic, Bangkok
- 16.15 Saint John School, Bangkok
- 16.16 Saint John International School, Bangkok
- 16.17 BB Building, Bangkok
- 16.18 Pachorn Place, Bangkok
- 16.19 Pacific Price Hotel, Chonburi
- 16.20 Welcome Jonthien Hotel, Chonburi
- 16.21 Talay Thong Tower, Chonburi
- 16.22 Rom-Po Mansion, Bangkok
- 16.23 Jarun Tower, Bangkok
- 16.24 Bang Pa Kong Royal Country Club, Cha Choeng Sao
- 16.25 UN-ESCAP building, Bangkok



W. AND ASSOCIATES



PROJECT REFERENCE

HOTEL





## CURRENT PROJECT

- HOTEL Soi Soonvijai
- Q1 Hilton Patong
- PATONG SAI 3
- IBIS Hotel Sukhumvit 48
- BANGKOK MARRIOTT Queen's Park
- IMPERIAL BOAT HOUSE (renovation)
- IMPERIAL SAMUI BEACH (Sheraton Samui)
- AMTHADA Hotel & Residence Phuket
- CAPE NGA Resort (Park Hyatt Phuket)
- AMARA Bangkok Hotel
- CROWNE Plaza, Bangkok
- THE SAIL Pattaya (Le Meridien Hotel)
- Le Meridien Suvarnabhumi
- SHERATON GRAND LAGOON, Phuket  
(Rebranded to ANGSANA Phuket)
- PARK HYATT Hotel and Residences, Samui

## PAST PROJECT

- BANYAN TREE Resort and Spa
- MODE SATHORN Hotel by Siam@Siam
- HILTON Sukhumvit Bangkok
- DOUBLE TREE by HILTON Sukhumvit Bangkok
- MARRIOTT Rayong (Phuphatara)
- INTER CONTINENTAL Hua Hin
- W RETREAT AND RESIDENCES, Samui
- S 31 Hotel
- MANDARIN ORIENTAL (The renovation)
- LE MERIDIEN Bangkok
- HOLIDAY INN Regent Beach Cha-Am
- HOLIDAY INN Pattaya
- SHERATON GRANDE LAGOON Hua Hin
- HOTEL PLAZA ATHENEE, a Royal Meridien hotel
- WESTIN GRANDE Sukhumvit (the renovation)
- J.W. MARRIOTT Hotel
- Grand HYATT Erawan Hotel
- FOUR SEASON Hotel (old Peninsular Bangkok)
- BAIYOKE 2 SKY Hotel
- SWISS Hotel (Le Concorde Complex)
- THE FISHERMAN's Village
- METROPOLE HOTEL, Phuket
- DUSIT RESORT HOTEL & POLO CLUB, Cha-Am
- CHIANGMAI HOLIDAY INN (Green Hill) Hotel
- TWIN LOTUS Hotel, Nakorn Srithamarat
- KEMPINSKI Hotel
- MOVENPIC Hotel
- SIAM CITY Hotel
- SWISS GARDEN Hotel
- BANGKOK TWIN TOWER Hotel
- LAGUNA BEACH Resort, Phuket
- ROYAL Chiang-Mai Hotel & Golf Club
- INDEPENDENCE Hotel,  
KAMPONGSOM, CAMBODIA (The renovation)
- LITTLE DUCK HOTEL, Chiang-Rai
- DELTA GRAND PACIFIC Hotel
- SIAM BALLROOM Phase 2  
(Siam Intercontinental Hotel)
- SOL TWIN Towers
- BAAN BORAN Chiang-Rai Hotel
- SALA Samui Resort
- SIRIPANNA Chiang-Mai Phase II
- Ambassador Hotel (the renovation)



# PROJECT REFERENCE

Hotels



Project Title	: <b>HOTEL SOI SOONVIJAI</b>
Location	: Soi soonvijai, Bangkok
Owner	: บริษัท อควาเรียส โฮเทล แอนด์ รีสอร์ท จำกัด
Commissioned	: 2015-2016
Project Summary	: Building A area is estimated at 3,800 sq.m. Building B area is estimated at 3,500 sq.m. Building C area is estimated at 3,900 sq.m. Total construction area is 11,200 sq.m.
Construction Cost	: 200 millions Baht
Firm's Role	: M&E System Design: Air-conditioning, Ventilating, Electrical Power, Lighting, Telecommunication, Fire Alarm, Building Management, CCTV, Gas piping, Hot water generation, Fire Fighting, Waste water treatment, Recycle water, Irrigation Pool Support, Public announcement, Vertical Transportation and Security System.

Civil and Structural design



# PROJECT REFERENCE

Hotels



Project Title : **PATONG SAI 3**

Location : Patong, Thailand

Owner : Boutique Asset Management Ltd

Commissioned : 2015-2017

Project Summary : Approx. 180 to 200 keys ,8 level structure, 2 levels underground basement , First level underground basement to contain Back of House offices. Roof top to have large resort type pool with Commercial kitchen/restaurant and bar/lounge to give resort feel (if inadequate space then we will move commercial kitchen to basement) .Construction area is estimated at 10,000 sq.m.

Construction Cost : 450 millions Baht

Firm's Role : M&E System Design: Air-conditioning, Ventilating, Electrical Power, Lighting, Telecommunication, Fire Alarm, Building Management, CCTV, Gas piping, Hot water generation, Fire Fighting, Waste water treatment, Recycle water, Irrigation Pool Support, Public announcement, Vertical Transportation and Security System.

Civil and Structural design





# PROJECT REFERENCE

## Hotels



Project Title	:	<b>IBIS Hotel</b>
Location	:	Prakhanong area, Bangkok
Owner	:	Apollo Estate Co., Ltd..
Commissioned	:	2014 - 2016
Project Summary	:	Construction area is estimated at 16,870 sq.m.
Construction Cost	:	800 millions Baht
Firm's Role	:	M&E System Design: Air-conditioning, Ventilating, Electrical Power, Lighting, Telecommunication, Fire Alarm, Building Management, CCTV, Gas piping, Hot water generation, Fire Fighting, Waste water treatment, Recycle water, Irrigation Pool Support, Public announcement, Vertical Transportation and Security System.
		Civil and Structural design



# PROJECT REFERENCE

Hotels



- Project Title : **BANGKOK MARRIOTT HOTEL Queen's Park**
- Location : Sukhumvit, Bangkok
- Owner : TCC Hotel Group
- Commissioned : 2015 - 2017
- Project Summary : a 800 rooms, 140,000 sq.m.-Hotel Rebranded to Marriott Hotel
- Construction Cost : 3,000 Million Baht ( Refurbish work)
- Firm's Role : M&E System Design: Air-conditioning, Ventilating, Electrical Power, Lighting, Telecommunication, Fire Alarm, CCTV, Fighting , Hot water and BMS.



Civil and Structural design



# PROJECT REFERENCE

## Hotels



Project Title : **HILTON SUKHUMVIT BANGKOK**

Location : Sukhumvit soi 24, Bangkok

Owner : TCC Group

Commissioned : 2006-2013

Project Summary : a 30,000 sq.m. hotel and retailed spaces.

Construction Cost : est. 52 millions USD

Firm's Role : M&E System Design: Air-conditioning, Ventilating, Electrical Power, Lighting, Telecommunication, Fire Alarm, Building Management, CCTV, Hot water generation, Fire Fighting, Waste water treatment, Security System and Vertical Transportation.



Project Title : **DOUBLE TREE**  
by HILTON

Location : Sukhumvit 24, Bangkok

Owner : TCC Group

Commissioned : 2010-2013

Project Summary : Redevelopment of TARA Hotel. 196 room with meeting rooms and its ancillary facilities  
Construction area est. 13,650 sq.m.

Construction Cost :

Firm's Role : M&E System Design: Air-conditioning, Ventilating, Electrical Power, Lighting, Telecommunication, Fire Alarm, Access Control, CCTV, Fire Fighting, Waste water treatment, Recycle water , Irrigation, Pool Support, Security System, BAS, Vertical Transportation.





# PROJECT REFERENCE

Hotels



Project Title : **INTER CONTINENTAL HUA HIN**  
 Location : Hua Hin, Prachuabkirikan  
 Owner : Proud Resort Hua Hin Co., Ltd.  
 Commissioned : 2007  
 Project Summary : 5-star Hotel and Resort 100 keys (24,000 sq.m.)  
 Construction Cost : est. 36 millions USD  
 Firm's Role : M&E System Design: Air-conditioning, Ventilating  
 Electrical Power, Lighting, Telecommunication  
 Fire Alarm, Building Management, CCTV  
 Hot Water Generation, Fire Fighting, Waste Water  
 Treatment, Security System and Vertical Transportation



# PROJECT REFERENCE

## Hotels



Project Title : **W RETREAT AND RESIDENCES**

Location : Koh Samui, Suratthani

Owner : Amburaya Hotel and Resort

Commissioned : 2009

Project Summary : A Resort Hotel situated at Northern Samui, comprising Hotel portions and Residences

Construction Cost : est. 58 millions USD

Firm's Role : M&E System Design: Air-conditioning, Ventilating, Electrical Power Lighting, Telecommunication, Fire Alarm, Building Management CCTV, Hot Water Generation, Fire Fighting, Waste Water Treatment Irrigation Security System and Vertical Transportation



# PROJECT REFERENCE

Hotels



Project Title : **BANYAN TREE Resort and Spa**

Location : Koh Samui, Suratthani

Owner : TCC Group of companies

Commissioned : 2008

Project Summary : 69 Rais of Land with 2 distinctive Villas

Construction Cost : est. 1,600 millions Baht

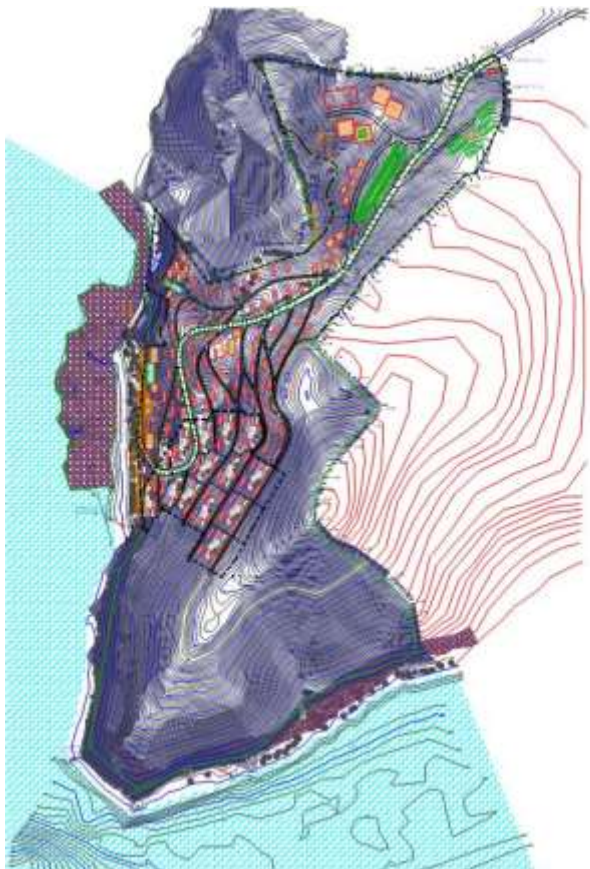
Firm's Role : M&E System Design: Air-conditioning, Ventilating, Electrical Power, Lighting, Telecommunication, Fire Alarm, Security, CCTV, Plumbing, Fire Fighting and Sanitary Dumbwaiter System.





# PROJECT REFERENCE

Hotels



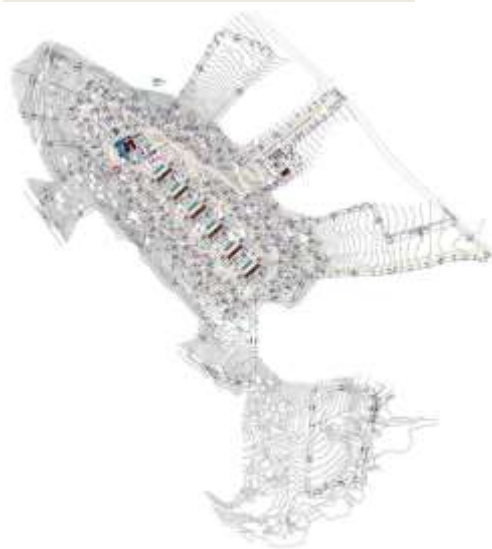
Project Title	:	<b>CAPE NGA RESORT</b>
Location	:	Phuket
Owner	:	Cape Nga Development Co., Ltd.
Commissioned	:	2010
Project Summary	:	60 Pool Villas, 10 residences (5 keys each) area 90 rais
Construction Cost	:	Est. 1,600 million baht
Firm's Role	:	M&E System Design: Air-conditioning, Ventilating, Electrical Power Lighting, Telecommunication, Fire Alarm, Building Management CCTV, Gas Piping, Hot Water Generation, Fire Fighting, Waste Water Treatment, Recycle water, Irrigation Pool Support, Public Announcement Vertical Transportation and Security System.

PARK HYATT™  
PARK  
HYATT



# PROJECT REFERENCE

Hotels



Project Title : **PARK HYATT Hotel and Residences**

Location : Koh Samui, Suratthani

Owner : Proud Resorts Koh Samui Co., Ltd.

Commissioned : 2009

Project Summary : 25,000 sq.m. of Hotel and Residence Villas

Construction Cost : est. 60 millions USD

Firm's Role : M&E System Design: Air-conditioning, Ventilating  
Electrical Power, Lighting, Telecommunication  
Fire Alarm, Building Management, CCTV, Gas piping  
Hot water generation, Fire Fighting, Waste water treatment  
Recycle water, Irrigation Pool Support and Security System.

PARK HYATT™  
PARK  
HYATT



# PROJECT REFERENCE

## Hotels



Project Title : **WESTIN GRANDE SUKHUMVIT**

Location : Sukhumvit Road, Bangkok.

Owner : Sukhumvit Centre Co., Ltd. (P.S Real Estate Group)

Commissioned : 1992

Project Summary : Site Area: 74,633 sq.m. 25-Storey, 420-Room Hotel.

Firm's Role : M&E System Design: Air-conditioning, and Ventilating System.

**WESTIN**  
HOTELS & RESORTS



Project Title : **HOTEL PLAZA ATHENEE**  
(a Royal Meridien hotel)

Location : Wireless Road, Bangkok.

Owner : Imperial Hotel Pcl.

Commissioned : 2000

Project Summary : Site Area: 50,000 Sq.m., 28-storey, 400-room  
Five Star Hotel.

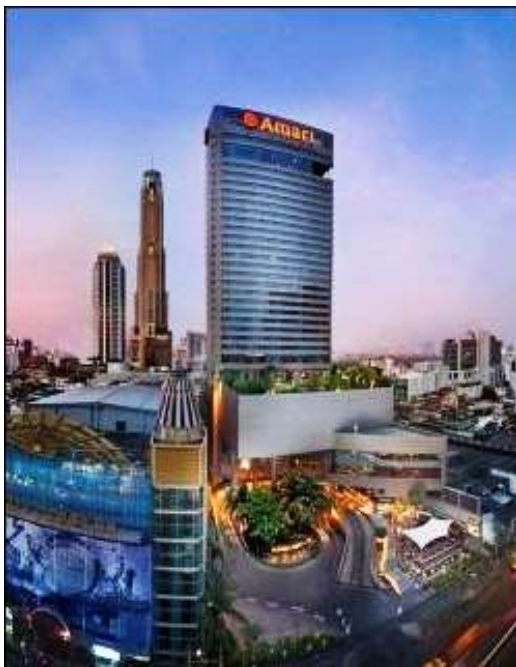
Firm's Role : M&E System Design: Air-conditioning and Ventilating System  
Electrical Power, Lighting, Telecommunication, Fire Alarm  
Security CCTV, Vertical Transportation, Fire Protection  
Plumbing, Fire Fighting and Sanitary System.





# PROJECT REFERENCE

Hotels



Project Title	: <b>AMARI WATERGATE Hotel 2013 renovation</b>
Location	: Pratunam, Bangkok
Owner	: ONYX Hospitality Group Co., Ltd.
Commissioned	: 2012-2013
Project Summary	: All Day Dining area est. 1,200 sq.m., 6 fl., 8 fl., Sukhothai & Ayudhaya suite and Gym area
Construction Cost	: -
Firm's Role	: M&E System Design: Air-conditioning, Ventilating, Electrical Power, Lighting, Telecommunication, Fire Alarm, CCTV, Fighting, Waste water treatment, Storm Drainage
	Construction Supervision Work



# PROJECT REFERENCE

## Hotels



Project Title : **SHERATON GRAND LAGOON**  
(Rebranded to ANGSA NA)

Location : Phuket, Thailand

Owner : Bangtao Grande Limited

Commissioned : 2011

Project Summary : Re-brand of existing hotel facilities to be Angsana Hotel

Construction Cost : -

Firm's Role : M&E System Design: Air-conditioning, Ventilating, Electrical Power, Lighting, Telecommunication, Fire Alarm, CCTV, Gas piping, Hot water generation, Fire Fighting, Waste water treatment and Security System.

Project Title : **MARRIOTT RAYONG**  
Phuphatara

Location : Rayong, Thailand

Owner : Vilailuk Properties Co., Ltd.

Commissioned : 2010

Project Summary : a 30,000 sq.m. of 5-stars Hotel building.

Construction Cost : est. 55 millions USD

Firm's Role : M&E System Design: Air-conditioning, Ventilating, Electrical Power, Lighting, Telecommunication, Fire Alarm, Building Management, CCTV, Gas piping, Hot water generation, Fire Fighting, Waste water treatment, Recycle water, Irrigation Pool Support and Security System.

# PROJECT REFERENCE

## Hotels



- Project Title : **MANDARIN ORIENTAL** The Renovation  
Back of House, Main Lobby
- Location : Bangkok
- Owner : Mandarin Oriental Hotel
- Commissioned : 2010
- Project Summary : Renovation for 5 stars Hotel
- Construction Cost :
- Firm's Role : M&E System Design: Air-conditioning, Ventilating  
Plumbing, Sanitary, Electrical Power, Lighting, Telecommunications  
CCTV, Fire Alarm and Building Automation System.





# PROJECT REFERENCE

## Hotels



Project Title : **HOLIDAY INN PATTAYA**  
 Location : Pattaya, Chonburi  
 Owner : Erawan Group  
 Commissioned : 2008  
 Project Summary : a 30,000-sq.m. Hotel  
 Construction Cost : est. 46 millions USD  
 Firm's Role : M&E System Design: Air-conditioning Ventilating  
 Electrical Power, Lighting, Telecommunication  
 Fire Alarm, Building Management, CCTV, Hot Water Generation  
 Fire Fighting, Waste water treatment, Security System and  
 Vertical Transportation.



Project Title : **TWIN LOTUS HOTEL**  
 Location : Pattanakarn-Kukwang Road, Nakhonsithammarat.  
 Owner : Southern B.M. Co., Ltd.  
 Commissioned : 1996  
 Project Summary : Site Area: 420-Room, 18-Storey Building.  
 Firm's Role : M&E System Design: Air-conditioning, Ventilating, Electrical Power,  
 Lighting, Telecommunication, Fire Alarm, Security, CCTV,  
 Vertical Transportation, Plumbing and Sanitary System.



# PROJECT REFERENCE

## Hotels



Project Title : **FOUR SEASON HOTEL**

Location : Ratchadamri Road, Bangkok, Thailand

Owner : Regent Hotel Co., Ltd.

Commissioned : 1985

Project Summary : Site Area: 400-Room Hotel and Shopping Arcade.

Firm's Role : M&E System Design: Air-conditioning, Ventilating  
Electrical Power, Lighting, Telecommunication  
Fire Alarm and Vertical Transportation System



Project Title : **JW MARRIOTT HOTEL**

Location : Ploenchit Road, Bangkok.

Owner : Amarin Plaza Group.

Commissioned : 1997

Project Summary : Site Area: 140,000 Sq.m.,  
Five Star Hotel, Shopping Arcade,  
and Office Building.

Firm's Role : M&E System Design: Air-conditioning,  
and Ventilating System



# PROJECT REFERENCE

Hotels



Project Title : **LE MERIDIEN BANGKOK**

Location : Surawongse Road, Bangkok

Owner : TCC Group

Commissioned : 2007

Project Summary : 32,000 sq.m. of hotel building.

Construction Cost : est. 52 millions USD

Firm's Role : M&E System Design: Air-conditioning, Ventilating, Plumbing, Sanitary, Electrical Power, Lighting, Telecommunications, CCTV, Fire Alarm and Building Automation System.

*Le* MERIDIEN



Project Title : **S 31**

Location : Sukhumvit Road, Bangkok

Owner : -

Commissioned : 2008

Project Summary : a 30,000 sq.m. hotel and retailed spaces.

Firm's Role : M&E System Design: Air-conditioning, Ventilating, Electrical Power, Lighting, Telecommunication, Fire Alarm, Building Management, CCTV, Hot water generation, Fire Fighting, Waste Water Treatment, Security System and Vertical Transportation.

**S**<sub>31</sub>





# PROJECT REFERENCE

## Hotels



- Project Title : **AMARA BANGKOK HOTEL**
- Location : Suriwong Rd., Bangkok
- Owner : AMARA Hospitality (Thailand) Co., Ltd.
- Commissioned : 2010
- Project Summary : Hotel 28-storey high rise,  
land area 2,180 sq.m. and  
construction area est. 21,800 sq.m.
- Construction Cost : -
- Firm's Role : M&E System Design: Air-conditioning, Ventilating, Electrical Power,  
Lighting, Telecommunication, Fire Alarm, CCTV, Access Control,  
Fire Fighting, Waste water treatment, Site Drainage, Pool Support,  
Security System and Vertical Transportation.



- Project Title : **CROWNE PLAZA**
- Location : Sukhumvit Road, Bangkok
- Owner : Grande Asset Development Public Co., Ltd.
- Commissioned : 2007 (under construction)
- Project Summary : 40,000 sq.m. of hotel building
- Construction Cost : est. 52 millions USD
- Firm's Role : M&E System Design: Air-conditioning, Ventilating, Plumbing,  
Sanitary, Electrical Power, Lighting, Telecommunications, CCTV,  
Fire Alarm and Building Automation System.



# PROJECT REFERENCE

## Hotels



- Project Title : **MODE SATHORN HOTEL**  
by SIAM @ SIAM
- Location : Bangkok
- Owner : K2 Land Co., Ltd.
- Commissioned : 2010
- Project Summary : Hotel 200 keys, 35-storey high, GFA 30,000 sq.m.
- Construction Cost : -
- Firm's Role : M&E System Design: Air-conditioning, Ventilating, Electrical Power, Lighting, Telecommunication, Fire Alarm, Access Control, CCTV, Fire Fighting, Waste water treatment, Recycle water, Irrigation, Pool Support, Security System, BAS, Vertical Transportation.



- Project Title : **SUMMIT WINDMILL Redevelopment**  
Le Meridien Hotel and Services Apartment
- Location : Bang-Na Trad Rd., Bangkok
- Owner : Summit Windmill Golf Club
- Commissioned : 2008
- Project Summary : 5-star Hotel and Service Apartment
- Construction Cost : est. 46 millions USD
- Firm's Role : M&E System Design: Air-conditioning, Ventilating, Electrical Power, Lighting, Telecommunication, Fire Alarm, Building Management, CCTV, Hot Water Generation, Fire Fighting, Building Automation, Waste Water Treatment, Security System and Vertical Transportation.

Le MERIDIEN



# PROJECT REFERENCE

Hotels



- Project Title : **BAIYOKE SKY HOTEL**  
Currently the tallest building in Thailand
- Location : Pratunam, Petchburi Road, Bangkok.
- Owner : Phoomiphawan Co.,Ltd.
- Commissioned : 1995
- Project Summary : Site Area: 159,920 sq.m., 1,000 Room Hotel, 87 Storeys High.
- Firm's Role : M&E System Design: Air-conditioning, Ventilating, Electrical Power Lighting, Telecommunication, Fire Alarm, Security, CCTV Vertical Transportation, Plumbing, and Sanitary System.



# PROJECT REFERENCE

Hotels



Project Title : **GRAND HYATT ERAWAN HOTEL**

Location : Ratchadamri Road, Bangkok.

Owner : Erawan Hotel Co., Ltd.

Commissioned : 1991

Project Summary : Site Area: 50,000 sq.m. 425-Room Five Star Hotel.

Firm's Role : M&E System Design: Air-conditioning, Ventilating, Electrical Power, Telecommunication, Vertical Transportation, and Lighting System.



# PROJECT REFERENCE

Hotels

**Hotel**

Project Title : **AMTHADA Hotel and Residence**

Location : Phuket, Thailand

Owner : -

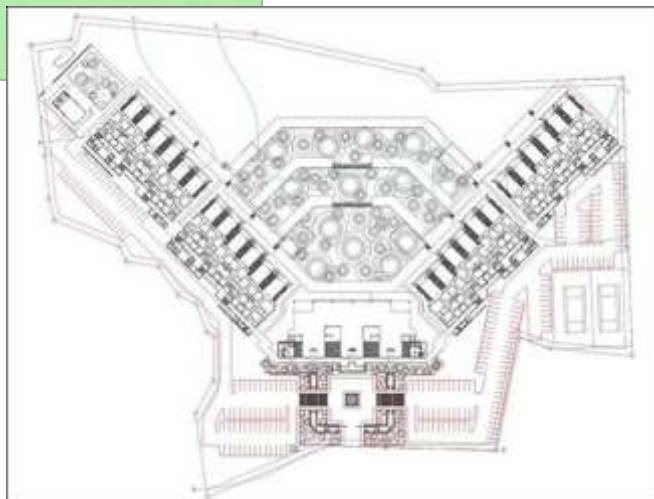
Commissioned : 2011

Project Summary : Hotel (20,000 sq. m.). Residences (40,000 sq. m.)

Construction Cost : 1,600 millions baht

Firm's Role : M&E System Design: Air-conditioning, Ventilating, Electrical Power, Lighting, Telecommunication, Fire Alarm, CCTV, Fighting, Waste water treatment, Storm Drainage

Civil and Structural design

**Condominium**

# PROJECT REFERENCE



Project Title : **BAAN BORAN CHIANG SAEN**  
(ANANTARA GOLDEN TRIANGLE)

Location : Golden Triangle, Chiangsaen

Owner : -

Commissioned : 1992

Project Summary : 110-room resort

Firm's Role : M&E System Design: Air-conditioning, Ventilating, Electrical Power, Lighting, Telecommunication, Fire Alarm, Plumbing and Sanitary System.

Hotels



Project Title : **SIRIPANNA CHIANGMAI PHASE II**

Location : Chiangmai

Owner : Siripanna Resort and Spa Co., Ltd.

Commissioned : 2008

Project Summary : 2,000 sq.m.

Firm's Role : M&E System Design: Air-conditioning, Ventilating, Electrical Lighting, Telecommunication, Fire Alarm, CCTV, Access Control, Fire Fighting, Waste water treatment, Storm Drainage, Security System and Vertical Transportation.



Project Title : **GRAND HYATT ERAWAN BANGKOK**

Location : Ratchaprasong Square

Owner : Amarin Plaza Groups

Commissioned : 2005

Project Summary : Renovation of the residence meeting area and pool deck with urban resort style villas

Construction Cost : est. 55 millions USD

Firm's Role : Mechanical and Electrical engineering

Associated Firms : Jirat and Associates Co., Ltd.  
Tonichi and Associates ( newyork )





# PROJECT REFERENCE

Hotels



Project Title : **SHERATON GRANDE LAGOON HUA HIN**  
Hotel Portion

Location : Hua Hin, Prachuabkirikan

Owner : Grande Asset Development Public Co., Ltd.

Commissioned : 2006

Project Summary : 40,000 sq.m. of hotel building.

Firm's Role : M&E System Design: Air-conditioning, Ventilating  
Plumbing, Sanitary, Electrical Power, Lighting  
Telecommunication, CCTV, Fire Alarm.



Project Title : **LAGUNA BEACH RESORT** (part of LAGUNA Phuket)

Location : Phuket Island

Owner : Thaiwah group

Commission : 1992

Project Summary : 250-room 5-star luxury resort on 20 acres of land.

Firm's Role : M&E System Design: Air-conditioning, Ventilatilation,  
Electrical Power, Lighting, Telecommunication,  
Fire Alarm, Plumbing and Sanitary System.



# PROJECT REFERENCE

## Hotels



Project Title : **HOLIDAY INN HOTEL**

Location : Chiangmai

Commissioned : 1995

Project Summary : 250-Room Hotel

Firm's Role : M&E System Design: Air-conditioning, Ventilating, Electrical Power, Lighting, Telecommunication, Fire Alarm, Security, CCTV, Vertical Transportation, Plumbing, Fire Fighting and Sanitary System.



Project Title : **HOLIDAY INN Regent Beach Cha-Am**

Location : Cha-Am, Petchaburi

Owner : Regent Hotel Group

Commissioned : 2007

Project Summary : Re-brand of existing hotel facilities to be Holiday Inn hotel & Resort

Firm's Role : M&E System Design: Air-conditioning, Ventilating, Electrical Power, Lighting, Telecommunication, Fire Alarm, Building Management, CCTV, Hot Water Generation, Fire Fighting, Waste Water Treatment and Security System.



# PROJECT REFERENCE

## Hotels



LE MERIDIEN

Project Title : **THE SAIL PATTAYA**  
Le Meridien Hotel and Condominium

Location : Jomthien, Pattaya

Owner : Grande Asset Development Pcl.

Commissioned : 2008

Project Summary : Five-star Hotel and Condominium  
(35,000 sq.m.)

Construction Cost : est. 65 millions USD

Firm's Role : M&E System Design: Air-conditioning, Ventilating, Electrical Power, Lighting, Telecommunication, Fire Alarm, Building Management, CCTV, Hot water generation, Fire Fighting, Waste water treatment, Security System and Vertical Transportation.



Project Title : **MERCURE** Ambassador hotel

Location : Bangkok, Thailand

Owner : The Ambassador group

Commissioned : 2007

Project Summary : Re-brand of existing hotel facilities to be Mercure hotel, part of ACCOR group

Firm's Role : M&E System Design: Air-conditioning, Ventilating, Electrical Power, Lighting, Telecommunication, Fire Alarm, Building Management, CCTV, Hot water generation, Fire Fighting and Security System.





# PROJECT REFERENCE

## Hotels



Project Title : **SIAM CITY HOTEL**

Location : Sri Ayudthaya Rd., Bangkok

Owner : Siam Thani Hotel

Commissioned : 1988

Project Summary : 20-Storey Hotel Tower

Firm's Role : M&E System Design: Air-conditioning, Ventilating, Electrical Power, Lighting, Telecommunication, Fire Alarm and Vertical, Transportation System.



Project Title : **METROPOLE HOTEL**

Location : Phuket

Owner : Prapitak Hotel

Project Summary : 18-Storeys hotel building

Firm's Role : M&E System Design: Air-conditioning, Ventilating, Electrical Power, Lighting, Telecommunication, Fire Alarm and Vertical Transportation System



Project Title : **SOL TWIN TOWERS**

Location : Rama VI Road, Bangkok.

Owner : Golden Asset Co., Ltd.

Commissioned : 1994

Project Summary : 700-Room Hotel

Firm's Role : M&E System Design: Air-conditioning, Ventilating, Electrical Power, Lighting, Telecommunication, Fire Alarm and Vertical Transportation System.



# PROJECT REFERENCE

## Hotels



Project Title	:	<b>IMPERIAL BOAT HOUSE Resort (the Renovation)</b>
Location	:	Samui Island, Suratthani Thailand
Owner	:	Hotel Group Service (Thailand) Co., Ltd.
Commissioned	:	2013-2014
Project Summary	:	3-storey resort hotel of 210 keys, Land area of 29,792 sq.m. GFA approx. 21,000 sq.m.
Construction Cost	:	-
Firm's Role	:	M&E System Design: Air-conditioning, Ventilating Electrical Power, Lighting, Telecommunication, Fire Alarm, Building Management, CCTV, Gas piping, Hot water generation, Fire Fighting, Waste water treatment, Irrigation Pool Support and Security System.



Project Title	:	<b>IMPERIAL SAMUI BEACH Resort (the Renovation)</b>
Location	:	Samui Island, Suratthani Thailand
Owner	:	Hotel Group Service (Thailand) Co., Ltd.
Commissioned	:	-
Project Summary	:	3-storey Hotel 141 keys, Land area of 34,964 sq.m. GFA approx. 40,000 sq.m.
Construction Cost	:	-
Firm's Role	:	M&E System Design: Air-conditioning, Ventilating Electrical Power, Lighting, Telecommunication, Fire Alarm, Building Management, CCTV, Gas piping, Hot water generation, Fire Fighting, Waste water treatment, Irrigation Pool Support and Security System.



# PROJECT REFERENCE

## Hotels



Project Title : **SALA SAMUI RESORT**

Location : Samui Island  
 Owner : Sala Samui Co., Ltd.  
 Commissioned : 2004  
 Project Summary : Resort with Luxury Villas, Suites totaling 70 units.  
 Firm's Role : M&E System Design: Air-conditioning, Ventilating, Electrical Power, Lighting, Telecommunication, Fire Alarm, Fire Fighting, Plumbing and Sanitary System.



Project Title : **FISHERMAN'S VILLEGE**

Location : Pethchburi  
 Commissioned : 2003  
 Firm's Role : Design of Plumbing, Fire Fighting, Waste treatment, Site Drainage and Sanitary System.



Project Title : **DUSIT AND RESORT HOTEL**

Location : Hua-Hin  
 Owner : Dusit Hotel Plc.  
 Commissioned : -  
 Project Summary : -  
 Firm's Role : M&E System Design: Air-Conditioning and Ventilating System.







W. AND ASSOCIATES

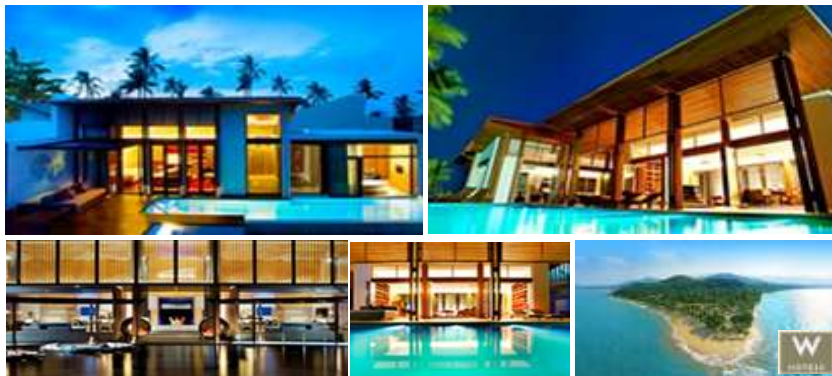


PAST PROJECTS



# PAST EXPERIENCE

## Hotels



W. RETREAT, SAMUI  
- M.E.P. -



BANYAN TREE, SAMUI  
- M.E.P. -



INTERCONTINENTAL HUA HIN  
- M.E.P. -



SHERATON GRANDE LAGOON HUA HIN  
- M.E.P. -



LAGUNA BEACH RESORT  
(Part of LAGUNA Phuket)  
- M.E.P. -

# PAST EXPERIENCE

## Hotels



DOUBLE TREE by HILTON  
M,E,P



MODE SATHORN HOTEL  
M,E,P



HILTON SUKHUMVIT BANGKOK  
M,E,P



MARIOTT RAYONG  
M,E,P

M = Mechanical E = Electrical P= Plumbing





# PAST EXPERIENCE

## Hotels



BAIYOKE SKY HOTEL  
Currently the tallest building in Thailand  
- M.E.P. -



GRAND HYATT ERAWAN HOTEL  
- M.E. -



TWIN LOTUS HOTEL  
- M.E.P. -



HOLIDAY INN CHIANG MAI  
- M.E.P. -



WESTIN GRANDE SUKHUMVIT  
- M. -



SIAM CITY HOTEL  
- M.E. -



INDEPENDENCE HOTEL CAMBODIA  
- M.E.P. -



FOUR SEASONS HOTEL  
- M.E. -



J.W. MARRIOTT HOTEL  
(Ploenchit Center)  
- M. -



SOL TWIN TOWERS  
- M.E. -



METROPOLE HOTEL, PHUKET  
- M.E.P. -

M = Mechanical E = Electrical P = Plumbing



# PAST EXPERIENCE

## Hotels



MANDARIN ORIENTAL The Renovation  
Back of House, Main Lobby



HOLIDAY INN PATTAYA  
- M,E,P -



S31 HOTEL  
- M,E,P -



HOTEL PLAZA ATHENEES  
- M,E,P -



LE MERIDIEN BANGKOK  
- M,E,P -



MERCURE AMBASSADOR HOTEL  
(Renovation)  
- M,E,P -



HOLIDAY INN REGENT BEACH CHA-AM (Renovation)  
- M,E,P -



FISHERMAN'S VILLAGE  
- E -



DUSIT AND RESORT HOTEL  
- M,E,P -



SHERATON GRAND LAGOON  
(Rebranded to ANGSANA)



SALA-SAMUI RESORTS  
- M,E,P -



BAAN BORAN CHIANG SAEN  
(ANANTARA GOLDEN TRIANGLE)

M = Mechanical E = Electrical P= Plumbing





# PAST EXPERIENCE

## Residential



SILVER BEACH CONDOMINIUM  
- E -



CITY LAKE CONDOMINIUM  
- M,E -



LA CASCADE  
- E -



SATHORN GARDEN  
- M -



ROYAL CHAROENKRUNG  
- M,E -



LUMPINI PARK VIEW  
- M,E,P -



PARK BEACH CONDOMINIUM  
- E -



SKY BEACH CONDOMINIUM  
- E -



JOMTIEN COMPLEX  
- E -



CENTRAL BANGNA (East Tower)  
- M,E,P -



COCONUT BEACH CONDOMINIUM  
- M,E,P -



THE PRESIDENT PARK  
- M,E -

M = Mechanical E = Electrical P = Plumbing





# PAST EXPERIENCE

## Residential



SATHORN PARK PLACE  
- M,E,P -



TRIDHOS CITY MARINA  
- M,E,P -



INTRO BY RASA Condominium  
- M,E,P -



BANGKOK RIVER PARK  
- M,E,P -



VILLA RACHATEWI  
- M,E,P -



METRO JOMTIEN CONDOTEL  
- M,E,P -



PARKLAND PHASE II  
- M,E,P -



THANA CITY



BAAN MON-CHALE  
- M,E,P -

M = Mechanical E = Electrical P = Plumbing



# PAST EXPERIENCE

## Residential



MODE SUKHUMVIT 61  
-M,E,P-



VILLA ASOKE  
-M,E,P-



VERTIQ CONDOMINIUM  
-M,E,P-



VIA BOTANI  
-M,E,P-



URBANO SATHORN  
-M,E,P-



THE AXIS CONDOMINIUM  
-M,E,P-



KHAO-YAI RESIDENCE  
-M,E,P-

M = Mechanical E = Electrical P = Plumbing





# PAST EXPERIENCE

Offices



MALEENOND TOWER  
(Channel 3 TV Studio)  
- M,E,P -



ESSO BUILDING



GRAND AMARIN TOWER  
- M,E,P -



UNITED CENTER  
- M,E -



C.T.I. TOWER  
- M,E -



JEWELRY TRADE CENTER  
- M,E,P -



S.S.P. TOWER III  
- M,E,P -



SRIJULSUP TOWER  
- M,E -



THE NATION TOWER I, II  
- M -



SIRIPINYO BUILDING  
- M,E -



WALL STREET TOWER  
- M,E -



GEMS TOWER  
- M,E,P -

M = Mechanical E = Electrical P = Plumbing





# PAST EXPERIENCE

Offices



ELEPHANT BUILDING  
- M,E,P -



BEAUTY GEMS BUILDING  
- M,E -



VILLA OFFICE  
- M,E,P -



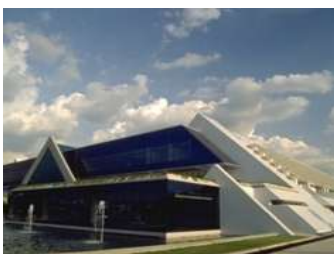
MALAYSIAN EMBASSY  
- M -



THAI LIFE INSURANCE



MINISTRY OF FINANCE  
- E -



MINISTRY OF FOREIGN AFFAIR  
- M -



UNITED NATION - ESCAP  
- M,E -



BANK NOTE PRINTING  
- M,E -



METROPOLITAN ELECTRICITY  
AUTHORITY, BANGKHAEN  
- M -



PRIVY COUNCIL OFFICE  
- M,E,P -



LECONCORDE COMPLEX  
- M,E,P -



PARLIAMENT BUILDING (OFFICE)  
- M,E,P -

M = Mechanical E = Electrical P = Plumbing



# PAST EXPERIENCE

## Corporate Offices



SIAM COMMERCIAL COMPLEX (PHASE III)  
- M.E.P. -



SIAM COMMERCIAL BANK  
(Old Head Quarter)



THAI AIRWAY INTERNATIONAL (Head Quarter)  
- M.E. -



SHELL HEAD OFFICE  
- M -



SAMAGGI TOWER  
- M.E.P. -



BANK OF ASIA  
(Head Quarter)  
- M -



KRUNGTHAI BANK  
(Head Quarter)  
- M.E. -



IFCT BUILDING  
- M.E. -

M = Mechanical E = Electrical P = Plumbing





# PAST EXPERIENCE

## Retails



CENTRAL PLAZA CHIANG-RAI  
- M.E.P -



ASIATIQUE the river front  
- M.E.P -



RAIN HILL  
- M.E.P -



THE VUE  
- M.E.P -



PORTO CHINO  
- M.E.P -



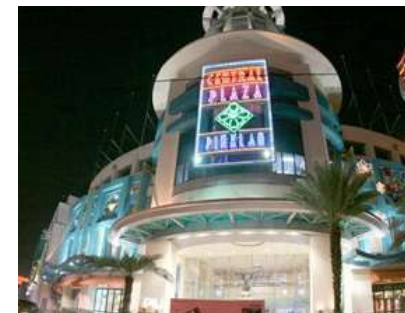
BIG C Super Center  
- M.E.P -



CENTRAL TOWN CENTER RATTANATHIBET  
- M.E.P -



CENTRAL PLAZA SURATTHANI  
- M.E.P -



CENTRAL PLAZA PINKLAO (The Renovation)  
- M.E.P -

M = Mechanical E = Electrical P = Plumbing





# PAST EXPERIENCE

Retails



AMARIN PLAZA  
- M.E -



BANGRAK PLAZA  
- M -



THE ERAWAN BANGKOK  
- M.E.P -



SILOM COMPLEX  
- E.P -



RAJADAMRI ARCADE  
- M.E -



SORAYA SHOPPING, PHNOM PENH  
- M.E.P -



GOLDEN CITY SHOPPING CENTER  
PHNOM PENH



LAKSI PLAZA  
- M.E -

M = Mechanical E = Electrical P = Plumbing



# PAST EXPERIENCE

## Health Cares



SRINAKARIN HOSPITAL  
-M,E,P-



KHONKAEN HOSPITAL  
-M,E,P-



BUA YAI HOSPITAL  
-M,E,P-



RATNIN EYE HOSPITAL  
-M,E,P-



KALASIN HOSPITAL  
-M,E,P-



BLOOD CENTER  
THAI RED CROSS SOCIETY  
-M,E,P-



SIRIRAJ HOSPITAL  
Laboratory and IT studies for medical student  
-M,E,P-



# PAST EXPERIENCE

## Health Cares



PATANA MEDICAL CENTER  
-M,E,P-



SONGKLANAKARIN HOSPITAL  
-M,E,P-





# PAST EXPERIENCE

Educations / Gym /  
Master plan



THAMMASAT UNIVERSITY  
(Rangsit Campus)

- Main Admission Office Building
- Lecture Building I
- Lecture Building III
- Lecture Building IV
- Faculty of Engineering Building (Int.)
- Library Building (Bangkok campus)
- Laboratories
- Multi-Purpose Building (Bangkok campus)



MAEFAH-LUANG UNIVERSITY  
Education Buildings  
- M.E.P -



Phaholyothin Site



Makkasan Site



AUDITORIUM  
Khon Khaen University  
- M.E -



THAMMASAT UNIVERSITY LIBRARY  
- M -



BANGKOK UNIVERSITY ART GALLERY  
- M.E.P -

STATE RAILWAY OF THAILAND  
The Master Plan for Land Use



GYMNASIUM, 13<sup>th</sup> ASIAN GAME  
- M -



HUAMARK STADIUM  
- E -

M = Mechanical E = Electrical P = Plumbing

